



GAT MONTHLY MEMBERSHIP PROGRESS REPORT

Results as of: 5/31/2024

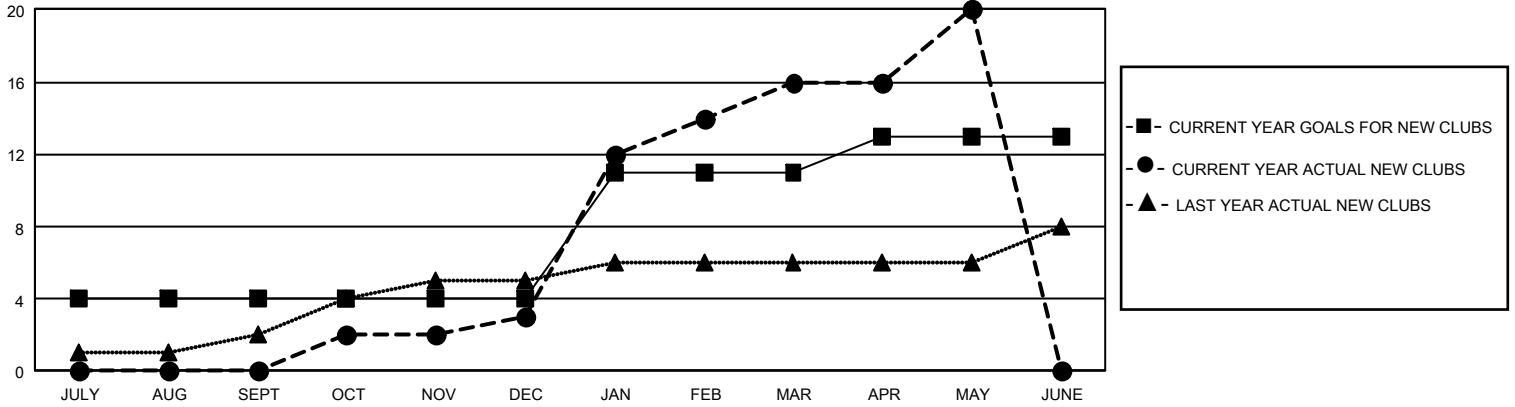
GMT Constitutional Area 5 - C, Group A

REPORT DOES NOT INCLUDE CLUBS IN UNDISTRICTED AREAS.

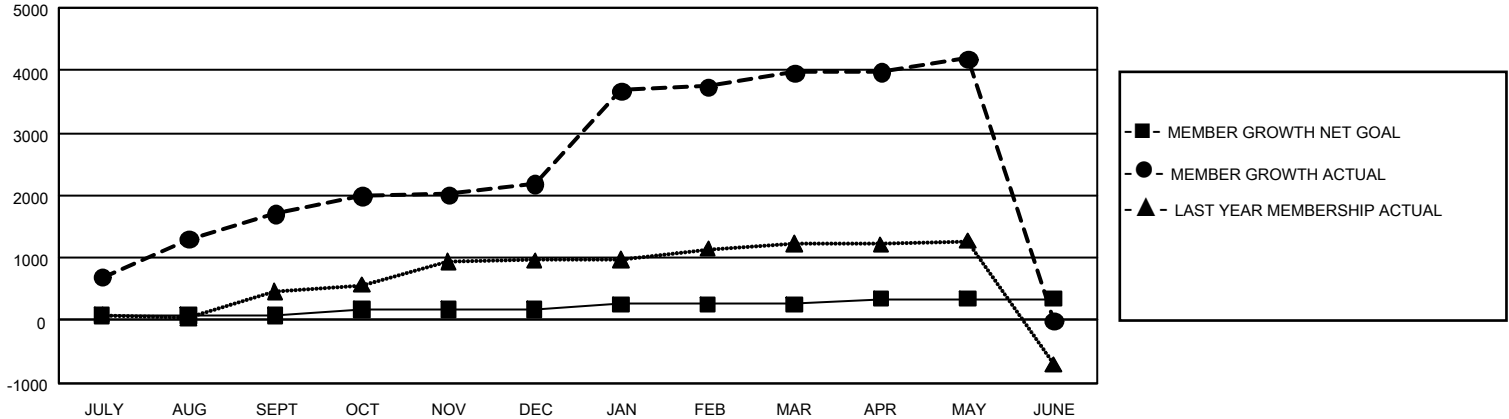
Clubs			
RESULTS FOR 2023-2024			
QUARTER	NEW CLUB GOAL	NEW CLUBS	DROPPED CLUBS
JULY/AUG/SEPT	12	0	2
OCT/NOV/DEC	0	3	3
JAN/FEB/MAR	21	13	0
APR/MAY/JUNE	6	4	0

Members			
RESULTS FOR 2023-2024			
QUARTER	MEMBER GROWTH NET GOAL	MEMBER GROWTH ACTUAL	DROPPED MEMBERS ACTUAL (including transfers)
JULY/AUG/SEPT	80	1,979	154
OCT/NOV/DEC	90	690	161
JAN/FEB/MAR	90	1,869	67
APR/MAY/JUNE	90	300	44

GOALS AND ACTUAL NEW CLUBS CUMULATIVE



GOALS AND ACTUAL MEMBERS CUMULATIVE



DROPPED CLUBS: 5 DROPPED MEMBERS DECEASED 16 CLUB CANCELLED 1 OTHER 407 TOTAL 424	592 CLUBS OF 673 ADDED 1 OR MORE NEW MEMBERS	GENDER DISTRIBUTION MALE 12,713 (63.44%) FEMALE 7,316 (36.51%) NON BINARY 0 (0.00%) PREFER NOT TO ANSWER 10 (0.05%)
	CLICK HERE FOR CUMULATIVE MEMBERSHIP DATA	TOTAL FAMILY UNIT MEMBERS 744 FAMILY MEMBERS PAYING HALF DUES 394